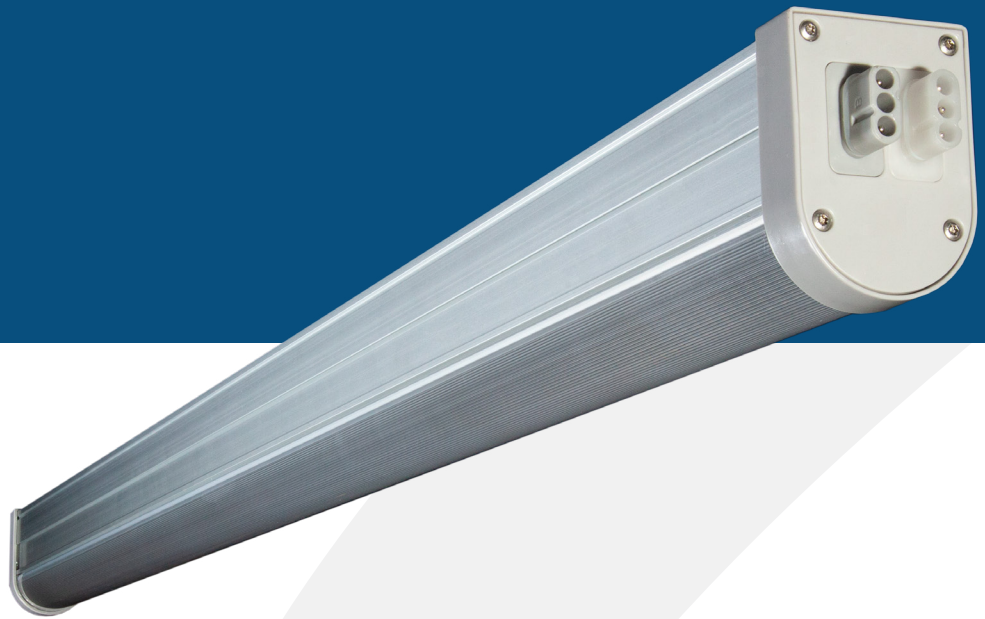




THRIVE AGRITECH

222 Broadway New York, NY 10038
(800) 205-7216
thriveagritech.com
info@thriveagritech.com



BOOST LED Light Bar

The new Boost Light Bar is a high output, high efficiency LED grow light designed to replace older lighting technologies including high pressure sodium and ceramic metal halide .

FEATURES & BENEFITS

- Greenhouse Supplemental: Increase DLI by 5-10 moles
- Indoor Vertical Grow: 1,000 $\mu\text{mol}/\text{m}^2/\text{sec}$ on the canopy
- Patent-pending intensity compensation technology
- 45-deg & 120-deg beam angles
- 0-10V dimming from max intensity to off
- Simple wiring & daisy-chaining
- 5-Year Warranty

SPECIFICATIONS

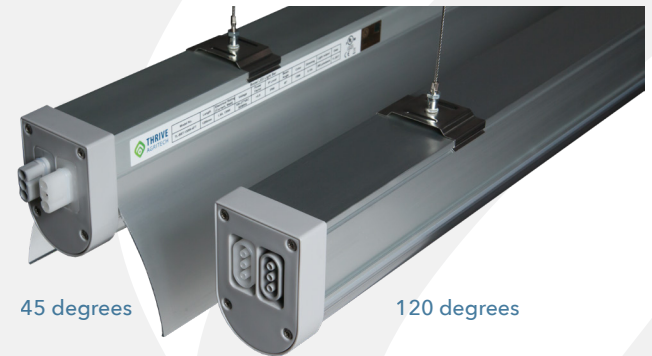
- 285 $\mu\text{mol}/\text{sec}$ Light Output
- 130W Electrical Input
- 2.2 $\mu\text{mol}/\text{joule}$ Efficiency
- 100V-277V Input
- IP66 Waterproof, UL & cUL Listed
- 62,000 Hour Lifetime

DIMENSIONS

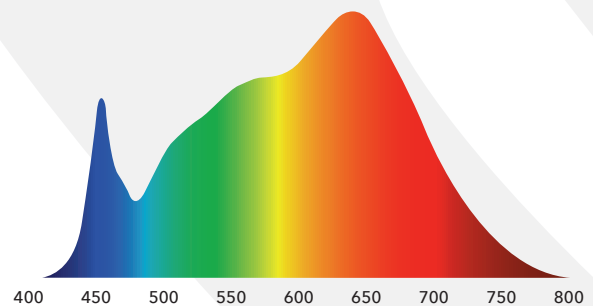
2.15" H



ILLUMINATION BEAM ANGLES



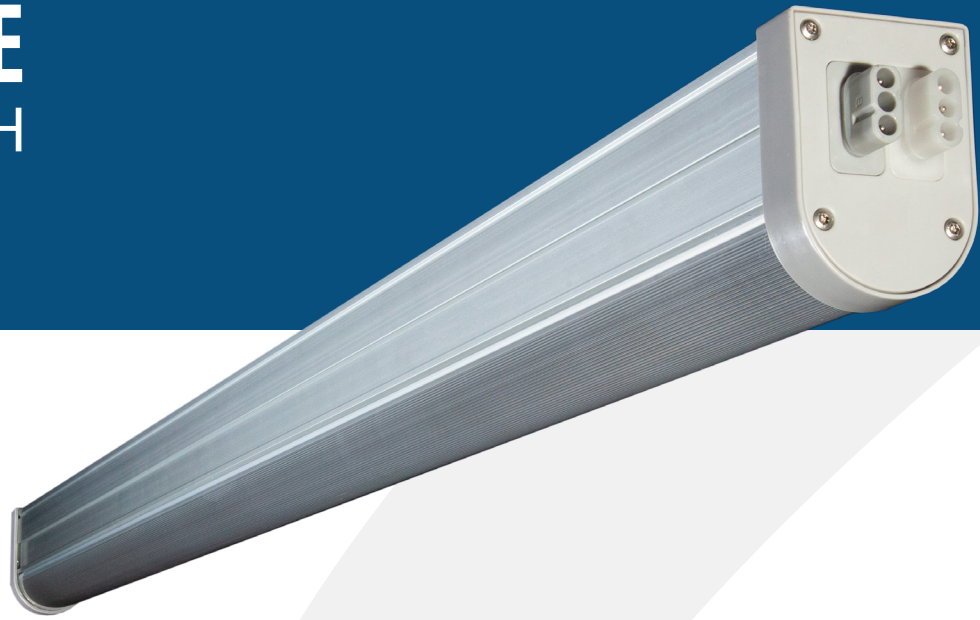
FULL SPECTRUM WHITE





THRIVE AGRITECH

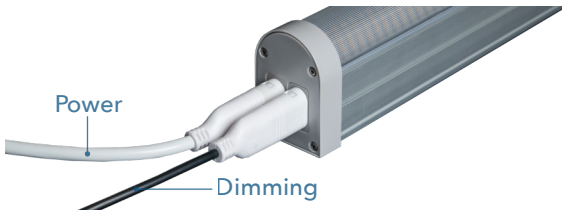
222 Broadway New York, NY 10038
(800) 205-7216
thriveagritech.com
info@thriveagritech.com



BOOST LED Light Bar

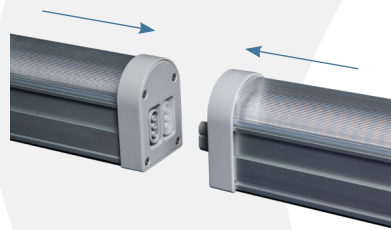
DIMMING

Two wire 0-10V dimming. Dimming spans from max intensity to off.
Dimming control access via fixture connector and cable.



WIRING & INTERCONNECTION

Boost LED light bars can be electrically connected end-to-end or with interconnection cables. See the installation manual for detailed instructions.

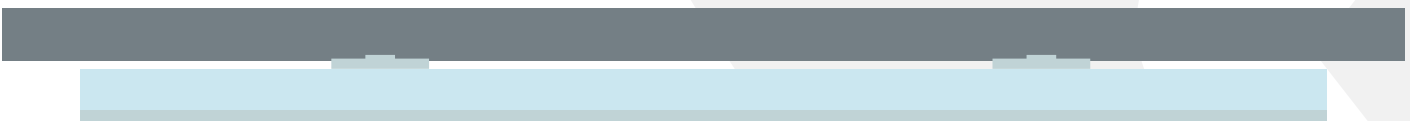


MAXIMUM DAISY-CHAIN

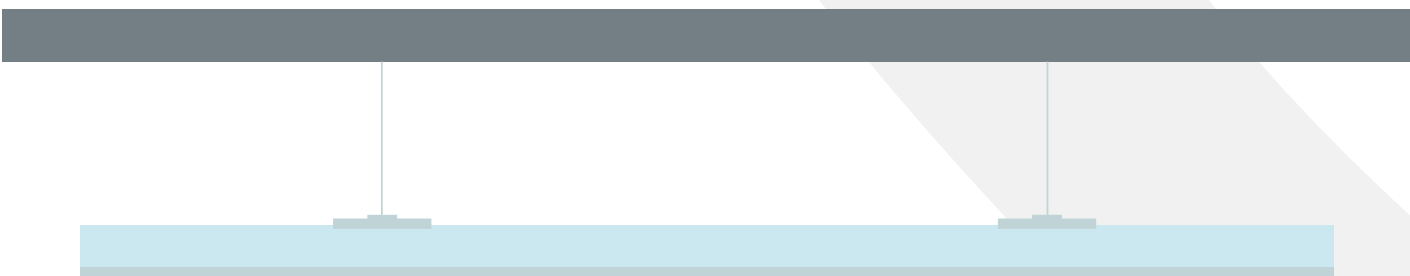
Voltage	Max # of connected
110	7
240	14
277	19

MOUNTING

FLUSH MOUNT



SUSPENSION MOUNT



LIGHTING LAYOUTS

Lighting layouts for a variety of horticulture applications available, if you need a customized lighting layout, please contact our customer support team. (800) 205-7216 • thriveagritech.com • info@thriveagritech.com

