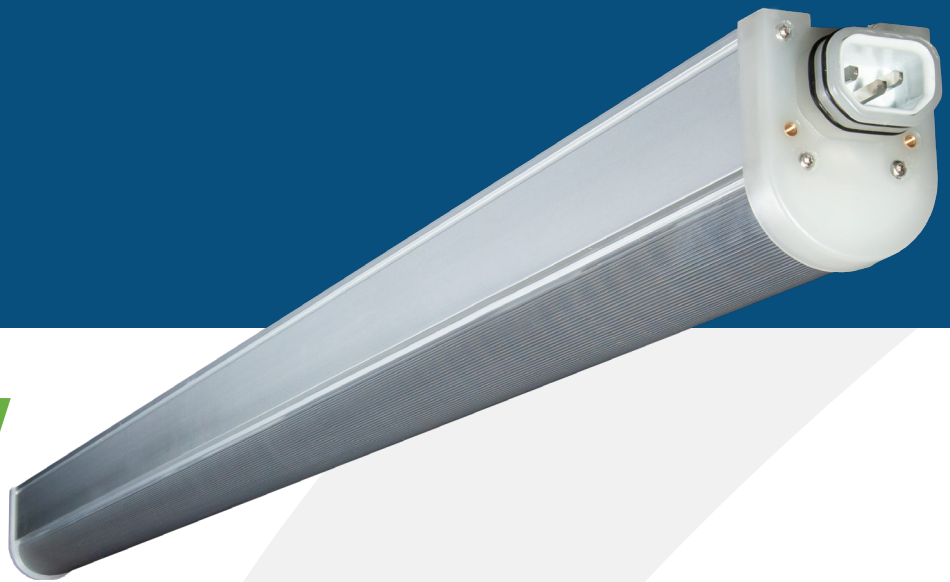




THRIVE AGRITECH

222 Broadway New York, NY 10038
(800) 205-7216
thriveagritech.com
info@thriveagritech.com



INFINITY

LED Light Bar

The Infinity Linear LED Light is a high output, high efficiency grow light developed specifically to enable quick and easy installation. The gapless interconnects make installation and daisy-chaining a snap.

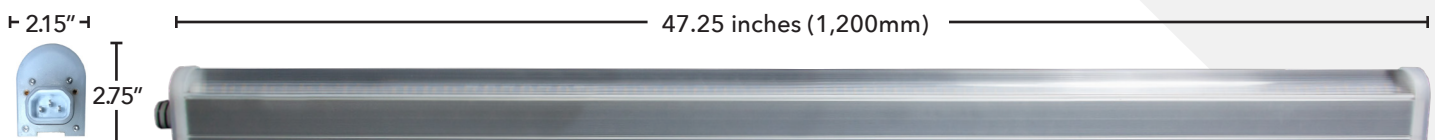
FEATURES & BENEFITS

- Simple wiring & daisy-chaining
- Suspension and Flush Mounting Options
- IP66 Rated

SPECIFICATIONS

- 58W Power Input
- 2.2 $\mu\text{mol}/\text{joule}$ Efficiency
- 125 $\mu\text{mol}/\text{sec}$ Light Output
- 100V-277V
- Full Spectrum White or Custom Spectrum
- 120-degree Beam angle
- 65,000 Hour Lifetime
- 5-Year Warranty

DIMENSIONS

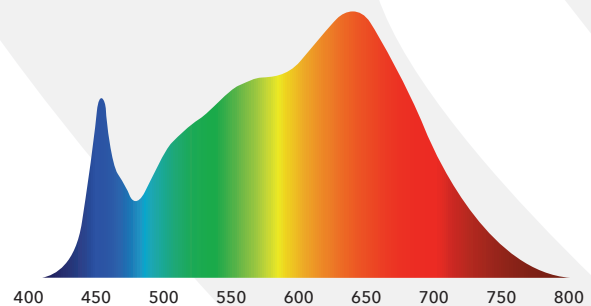


ILLUMINATION BEAM ANGLES



120 degrees

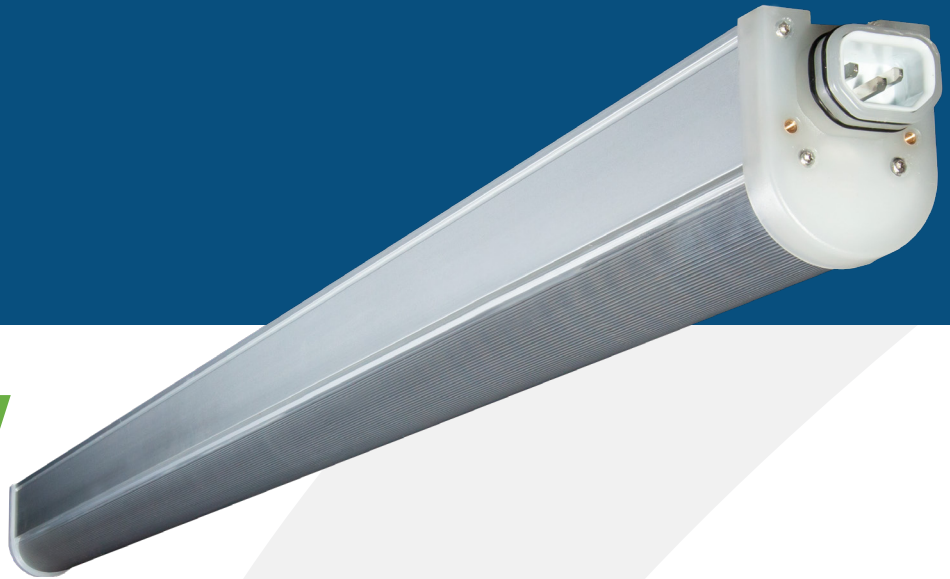
FULL SPECTRUM WHITE





THRIVE AGRITECH

222 Broadway New York, NY 10038
(800) 205-7216
thriveagritech.com
info@thriveagritech.com



INFINITY

LED Light Bar

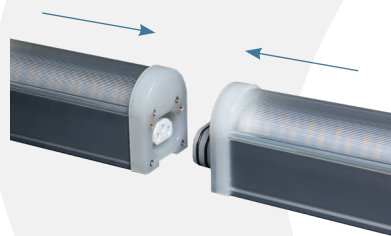
POWER CONNECTION

Accepts 100V-277V



WIRING & INTERCONNECTION

Infinity LED light bars can be electrically connected end-to-end or with inter-connection cables. See the installation manual for detailed instructions.

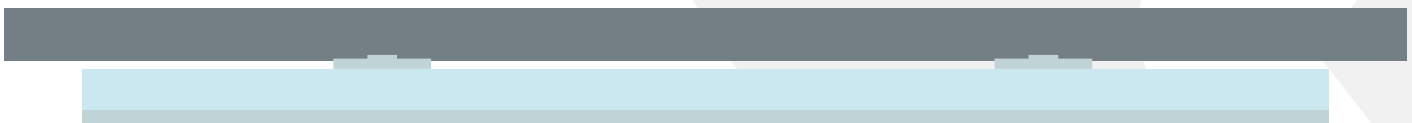


MAXIMUM DAISY-CHAIN

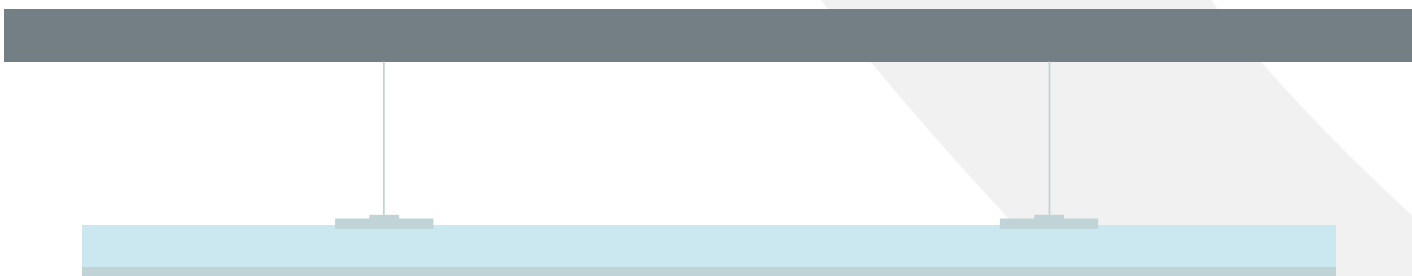
Voltage	Max # of connected
110	12
240	30
277	36

MOUNTING

FLUSH MOUNT



SUSPENSION MOUNT



LIGHTING LAYOUTS

Lighting layouts for a variety of horticulture applications available, if you need a customized lighting layout, please contact our customer support team. (800) 205-7216 • thriveagritech.com • info@thriveagritech.com

